

Palos WP Growth Fund

PALOS

For the period ending December 31, 2020

Reasons To Own The Fund

- The fund is managed to have a lower correlation to the S&P/TSX Composite Index
- The fund has exposure to small capitalization securities to enhance capital growth potential

Investment Objectives

The Fund's primary objectives are:

- Provide long term capital growth
- Deliver trading-enhancing returns

The Fund invests in a portfolio of primarily Canadian securities, such as equity securities of small to large-capitalization issuers or convertible debentures of Canadian and US companies.

Asset Allocation

Common Equity	117.3%
Preferred Equity	0.0%
Fixed Income	1.2%
Cash	-18.5%

Market Exposure

Long	118.5%
Short	0.0%
Cash	-18.5%

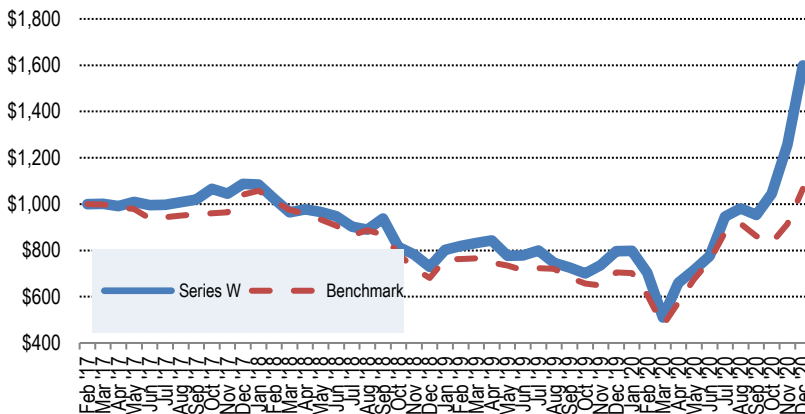
Geographic Allocation

Canada	99.4%
USA	0.6%

Top Sector Mix

Consumer Discretionary	1.8%
Consumer Staples	3.9%
Energy	17.5%
Financials	0.4%
Health Care	19.0%
Industrials	4.7%
Technology	13.7%
Basic Materials	53.4%
Communication Services	3.3%
Utilities	0.6%
Real Estate	0.2%
Cash	-18.5%
Total	100.0%

Fund Performance (Series W) - Cumulative Growth of \$1,000



Trailing Compounded Returns (Series W) - Before All Fees

	1 Month	3 Month	6 Month	1 Year	3 Year	5 Year	10 Year	Inception
Series W	27.33%	67.83%	106.19%	100.84%	47.30%	---	-	10.79%
Benchmark	16.66%	8.97%	41.17%	51.58%	2.90%	-	-	1.51%

Monthly Performance (Series W) - Returns Are Before All Fees

	Jan.	Feb.	Mar.	Apr.	May	Jun.	Jul.	Aug.	Sep.	Oct.	Nov.	Dec.	YTD Benchmark
2020	0.19%	-11.74%	-27.60%	29.17%	8.35%	8.71%	21.88%	3.74%	-2.83%	9.70%	20.15%	27.33%	100.84%
2019	10.04%	2.09%	1.59%	1.34%	-7.88%	0.19%	2.75%	-6.60%	-2.69%	-3.59%	5.12%	8.22%	9.33%
2018	-0.24%	-5.67%	-5.65%	1.22%	-1.14%	-1.82%	-4.70%	-1.45%	5.30%	-12.98%	-4.08%	-6.84%	-32.92%
2017			0.08%	-1.04%	1.79%	-1.25%	0.12%	1.13%	1.07%	4.66%	-1.96%	4.04%	8.76%
													4.09%

Fund Details

Fund Type	Trust
Registered Account	Eligible
Base Currency	CAD
Benchmark	S&P/TSX Venture Composite Index
Unit Price	15.96

Top Holdings Within The Underlying Fund

NANOXPLORE INC	7.1%
CRITICAL ELEMENTS LITHIUM CO	5.8%
TOUCHSTONE EXPLORATION INC	4.4%
GREENLANE RENEWABLES INC	4.1%
CARDIOL THERAPEUTICS INC-A	3.2%
FIRST QUANTUM MINERALS LTD	2.9%
VSBLTY GROUPE TECHNOLOGIES C	2.8%
CB2 INSIGHTS INC	2.7%
PETROLAL CORP	2.7%
INTERFOR CORP	2.3%
CONVERGE TECHNOLOGY SOLUTION	2.0%
CHAMPION IRON LTD	1.7%
AUXICO RESOURCES CANADA INC	1.5%
LIGHTSPEED POS INC-SUB VOTE	1.5%
MDF COMMERCE INC	1.4%

Portfolio Management Team

The portfolio management team at Palos has specialized and extensive expertise managing Canadian securities.

Wakeham Pilot

Chairman of the Board - Wealth Management

Charles Marleau, CIM

President and Senior Portfolio Manager



Disclaimer: This publication contents may be copied, downloaded, stored in a retrieval system, further transmitted, or otherwise reproduced, disseminated, transferred, in any form or by any means, so long as it is not altered in any way. This publication is proprietary to Palos Management Inc. The information and opinions contained herein have been compiled or arrived at from sources believed reliable but no representation or warranty, express or implied, is made as to their accuracy or completeness. The information contained herein is not necessarily complete and its accuracy is not guaranteed by Palos Management Inc. or any of its affiliates. If you have received this communication in error, please notify us immediately by electronic mail at info@palos.ca or telephone at 514-397-0188. Neither the information, nor any opinion expressed constitutes a solicitation. Performance data represents past performance and is not indicative of future performance. This fund is offered on a prospectus-exempt basis and may not be suitable for you. Please consult your investment advisor.

Note to the Reader regarding Benchmarks: This performance sheet uses a benchmark, the S&P/TSX Composite Total Return Index, as a comparison to the fund. There are certain differences between the index and the fund's investment strategy that investors and potential investors should understand in order for the comparison to be meaningful.

The primary investment strategy employed by the Fund is to apply qualitative, quantitative and comparative research to manage a portfolio of selected high growth securities. The Fund may take both long and short positions and will aim to produce returns above the S&P/TSX Toronto Stock Market Index by investing into companies with an attractive growth profile. The Fund may choose to deviate from its investment objective by temporarily investing most or all of its assets in cash or fixed income securities during periods of market downturn or for other reasons. As a result, the composition of the fund may be significantly different from the index. The Fund is different from the index in other ways. An index, in general, is a passive basket of securities, while the Fund is actively managed. The Fund incurs expenses (including commissions, operating expenses, and taxes) which are deducted from the assets of the Fund (however, the returns presented on this performance sheet are net of expenses). An index has no such expenses. For more information, please contact your advisor.