

# Palos WP Growth Fund



For the period ending August 31, 2024

## Reasons To Own The Fund

- The fund is managed to have a lower correlation to the S&P/TSX Composite Index
- The fund has exposure to small capitalization securities to enhance capital growth potential

## Investment Objectives

The Fund's primary objectives are:

- Provide long term capital growth
- Deliver trading-enhancing returns

The Fund invests in a portfolio of primarily Canadian securities, such as equity securities of small to large-capitalization issuers or convertible debentures of Canadian and US companies.

## Asset Allocation

Common Equity	105.7%
Preferred Equity	0.0%
Fixed Income	10.8%
Cash	-16.5%

## Market Exposure

Long	116.5%
Short	0.0%
Cash	-16.5%

## Geographic Allocation

Canada	94.4%
USA	5.6%

## Top Sector Mix

Communication Services	0.0%
Consumer Discretionary	3.7%
Consumer Staples	0.9%
Energy	14.8%
Financials	2.1%
Health Care	9.2%
Industrials	2.3%
Materials	67.0%
Real Estate	0.0%
Technology	5.6%
Utilities	0.1%
Fixed Income	10.8%
Cash	-16.5%
Total	100.0%

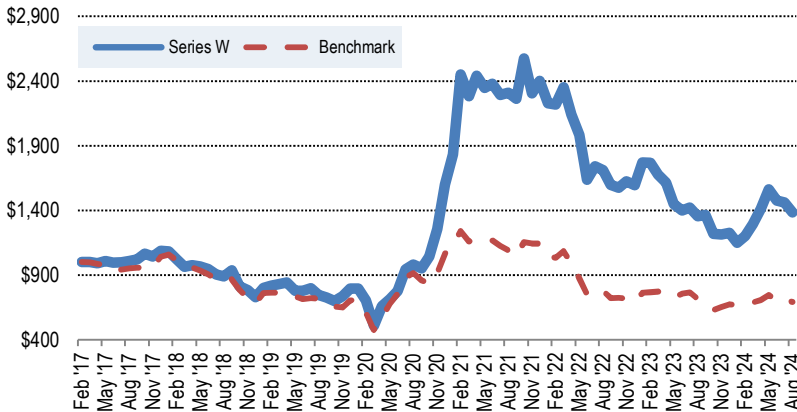
## Fund Details

Fund Type	Trust
Registered Account	Eligible
Base Currency	CAD
Benchmark	S&P/TSX Venture Composite Index
Unit Price	10.61

## Top Holdings Within The Underlying Fund

POWER NICKEL INC	7.6%
NANOXPLORE INC	5.2%
NG ENERGY INTERNATIONAL CORP	4.3%
CARDIOL THERAPEUTICS INC-A	4.3%
CRITICAL ELEMENTS LITHIUM CO	2.8%
NEXGEN ENERGY LTD	2.7%
PLURILOCK SECURITY INC	2.5%
KITS EYECARE LTD	2.1%
ADURO CLEAN TECHNOLOGIES INC	2.1%
IVANHOE MINES LTD-CL A	2.0%
SATURN OIL & GAS INC	1.5%
YERBAE BRANDS CORP	1.5%
OMAI GOLD MINES CORP	1.5%
MEDX HEALTH CORP	1.3%
PROBE GOLD INC	1.3%

## Fund Performance (Series W) - Cumulative Growth of \$1,000



## Portfolio Management Team

The portfolio management team at Palos has specialized and extensive expertise managing Canadian securities.

### Wakeham Pilot

Chairman of the Board - Wealth Management

Charles Marleau, CIM®

Chief Investment Officer

## Trailing Compounded Returns (Series W) - Before All Fees

	1 Month	3 Month	6 Month	1 Year	3 Year	5 Year	10 Year	Inception
Series W	-5.38%	-11.55%	15.15%	2.07%	-15.74%	13.12%	-	4.43%
Benchmark	-2.52%	5.65%	1.39%	-3.19%	-14.12%	-0.74%	-	-3.96%

## Monthly Performance (Series W) - Returns Are Before All Fees

	Jan.	Feb.	Mar.	Apr.	May	Jun.	Jul.	Aug.	Sep.	Oct.	Nov.	Dec.	YTD	Benchmark
2024	-6.37%	4.53%	7.66%	9.19%	10.75%	-5.71%	-0.86%	-5.38%					12.70%	2.72%
2023	11.10%	-0.19%	-5.12%	-3.78%	-10.31%	1.64%	-3.31%	-4.80%	0.61%	-10.59%	-0.29%	0.97%	-23.07%	-3.05%
2022	-7.29%	-0.44%	6.05%	-8.91%	-7.48%	-17.36%	6.28%	-1.71%	-6.63%	-1.45%	3.18%	-1.83%	-33.62%	-39.28%
2021	14.52%	33.74%	-6.76%	6.86%	-3.90%	1.51%	-3.68%	0.72%	-1.97%	13.64%	-10.41%	4.15%	50.12%	7.28%
2020	0.19%	-11.74%	-27.60%	29.17%	8.35%	8.71%	21.88%	3.74%	-2.83%	9.70%	20.15%	27.33%	100.84%	51.59%
2019	10.04%	2.09%	1.59%	1.34%	-7.88%	0.19%	2.75%	-6.60%	-2.69%	-3.59%	5.12%	8.22%	9.33%	3.64%
2018	-0.24%	-5.67%	-5.65%	1.22%	-1.14%	-1.82%	-4.70%	-1.45%	5.30%	-12.98%	-4.08%	-6.84%	-32.92%	-34.50%
2017			0.08%	-1.04%	1.79%	-1.25%	0.12%	1.13%	1.07%	4.66%	-1.96%	4.04%	8.76%	4.09%



**Disclaimer:** This publication contents may be copied, downloaded, stored in a retrieval system, further transmitted, or otherwise reproduced, disseminated, transferred, in any form or by any means, so long as it is not altered in any way. This publication is proprietary to Palos Management Inc. The information and opinions contained herein have been compiled or arrived at from sources believed reliable but no representation or warranty, express or implied, is made as to their accuracy or completeness. The information contained herein is not necessarily complete and its accuracy is not guaranteed by Palos Management Inc. or any of its affiliates. If you have received this communication in error, please notify us immediately by electronic mail at [info@palos.ca](mailto:info@palos.ca) or telephone at 514-397-0188. Neither the information, nor any opinion expressed constitutes a solicitation. Performance data represents past performance and is not indicative of future performance. This fund is offered on a prospectus-exempt basis and may not be suitable for you. Please consult your investment advisor. Palos Funds are not available for non-Canadian residents.

**Note to the Reader regarding Benchmarks:** This performance sheet uses a benchmark, the S&P/TSX Composite Total Return Index, as a comparison to the fund. There are certain differences between the index and the fund's investment strategy that investors and potential investors should understand in order for the comparison to be meaningful.

The primary investment strategy employed by the Fund is to apply qualitative, quantitative and comparative research to manage a portfolio of selected high growth securities. The Fund may take both long and short positions and will aim to produce returns above the S&P/TSX Toronto Stock Market Index by investing into companies with an attractive growth profile. The Fund may choose to deviate from its investment objective by temporarily investing most or all of its assets in cash or fixed income securities during periods of market downturn or for other reasons. As a result, the composition of the fund may be significantly different from the index. The Fund is different from the index in other ways. An index, in general, is a passive basket of securities, while the Fund is actively managed. The Fund incurs expenses (including commissions, operating expenses, and taxes) which are deducted from the assets of the Fund (however, the returns presented on this performance sheet are net of expenses). An index has no such expenses. For more information, please contact your advisor.

Palos Management Inc.

1 Place Ville-Marie, Suite 1670, Montreal, QC, H3B 2B6, Canada

Tel 514.397.0188

Fax 514.397.0199

[www.palos.ca](http://www.palos.ca)